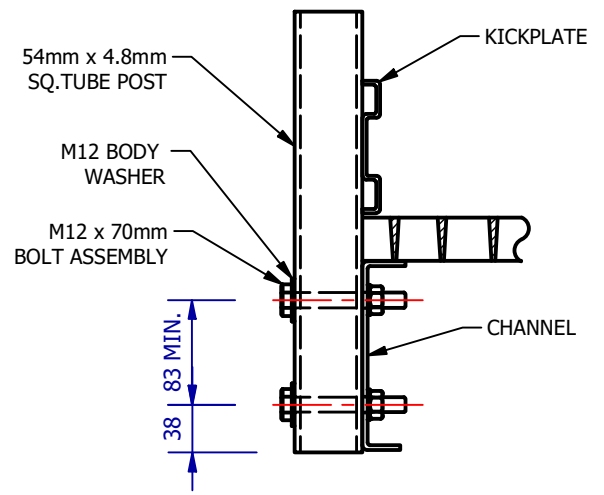
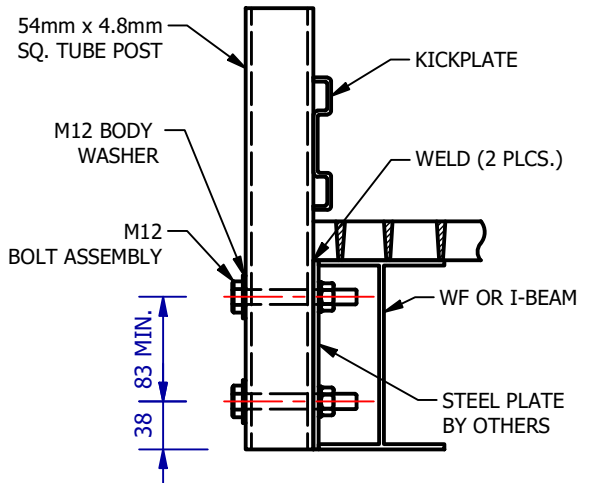


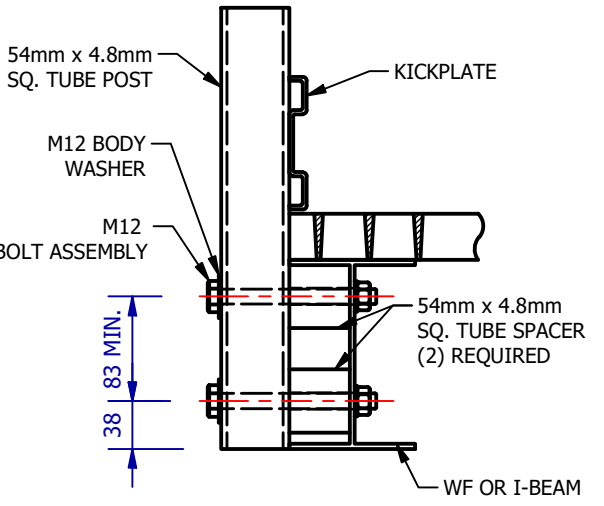
DRAWING A - STANCHION POST TO FRP OR STEEL CHANNEL



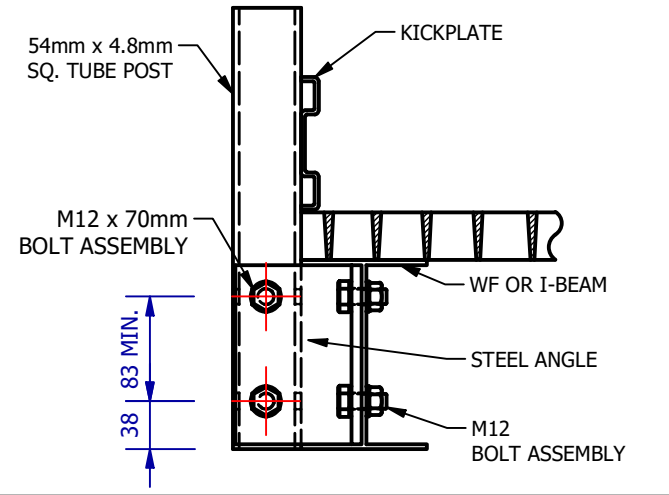
DRAWING B - STANCHION POST TO STEEL PLATE ON STEEL BEAM



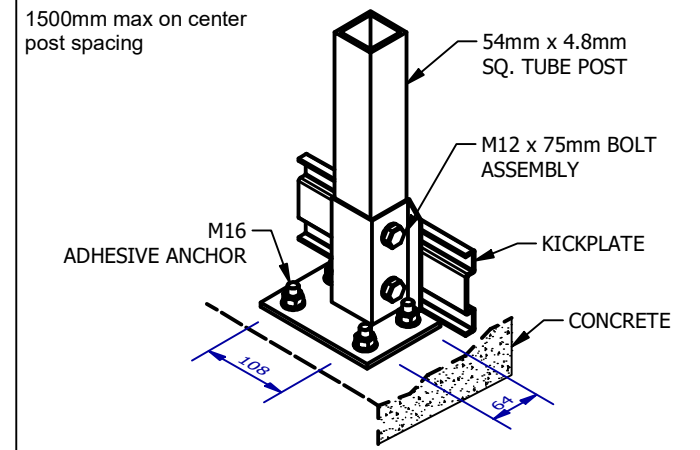
DRAWING C - STANCHION POST TO FRP OR STEEL BEAM OR CHANNEL WITH FRP SPACERS



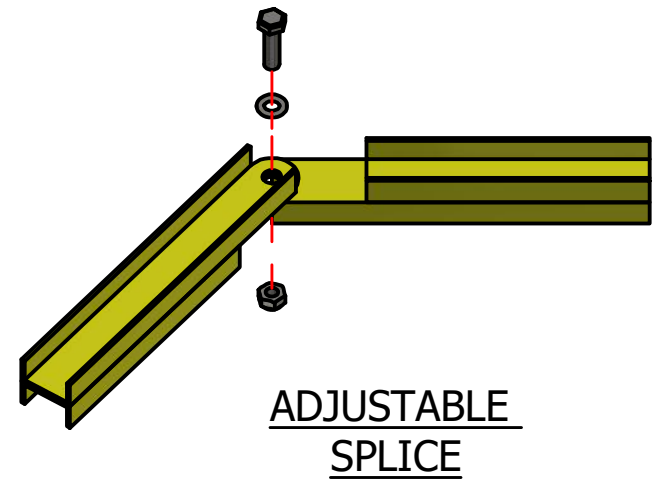
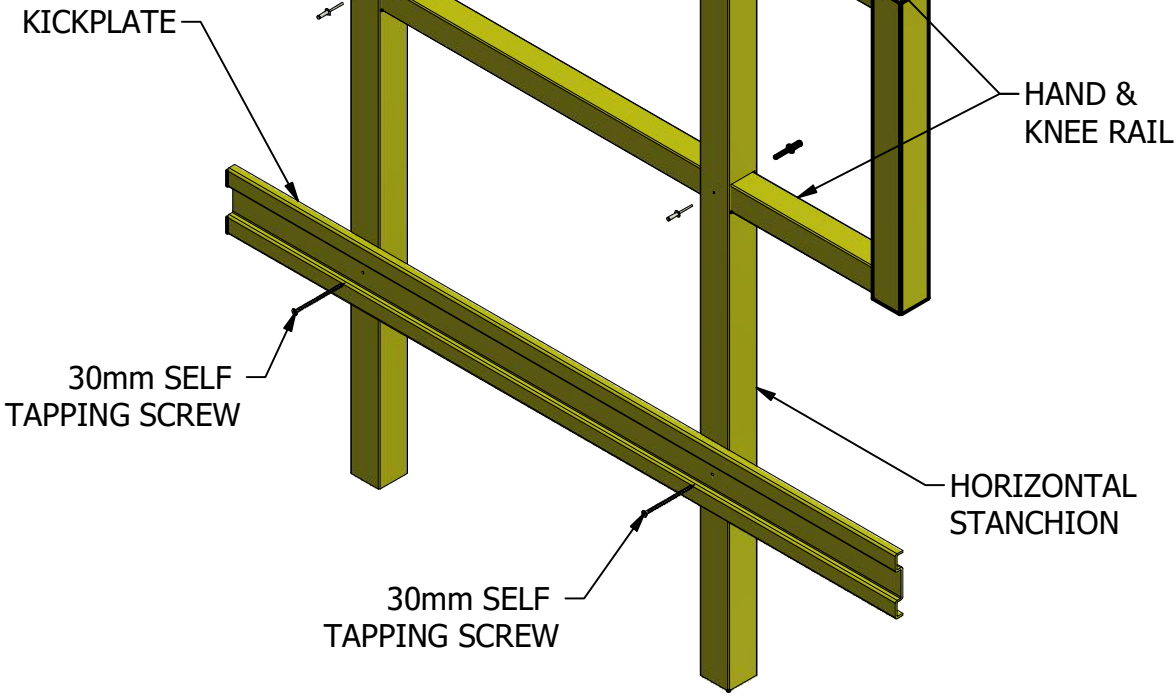
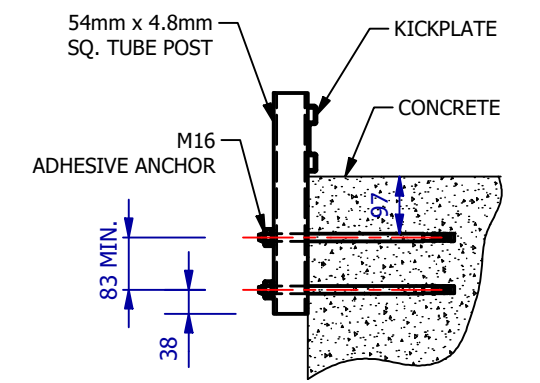
DRAWING D - POST TO STEEL ANGLE ON FRP OR STEEL BEAM



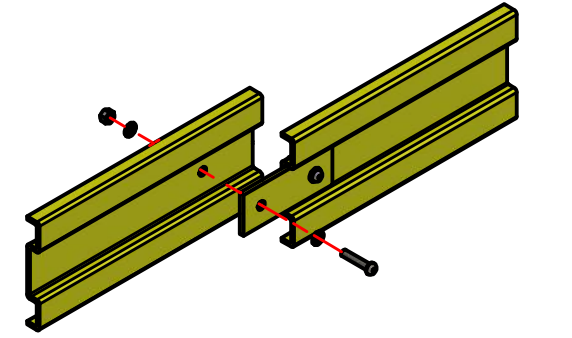
DRAWING E - TOP MOUNT STAINLESS STEEL STANCHION BASE



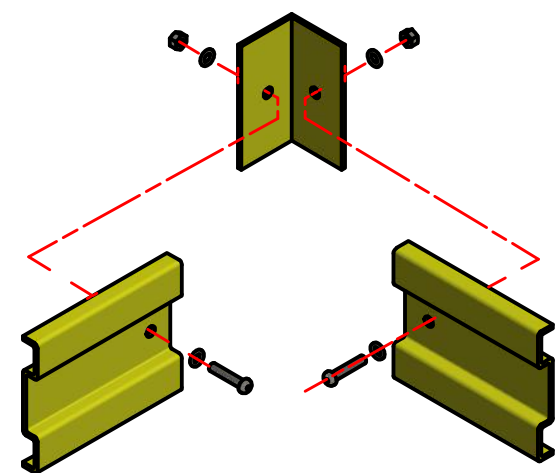
DRAWING F - SIDE-MOUNTED POST



ADJUSTABLE SPLICE



KICKPLATE SPLICE DETAIL



90° KICKPLATE SPLICE

MAX PULLOUT FORCE ON EACH CONCRETE ANCHOR

	Drawing E	Drawing F
OHSA (0.9 kN)	5.7 kN	9.5kN
IBC (0.7 kN/m)	7.9 kN	14.2kN

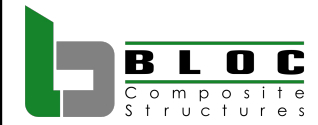
RECORD OF DRAWING CREATOR

DRAWN:	B.G	DATE:	03/02/2023
CHECKED:		DATE:	
APPROVED:		DATE:	

RECORD OF REVISIONS

REV.:	DESCRIPTION:

STANDARD HANDRAIL ASSEMBLY HORIZONTAL



BLOC Composite Structures (Pty) Ltd
 10 Tramway Road
 Parkhill
 Durban
 Reg.: 2022/835166/07